



Accessible and inclusive services



LGBTQI+ Community

We believe everyone deserves to feel safe and respected. Our trauma-responsive services understand the unique challenges faced by LGBTQI+ survivors offering safe, and person-led support.



Support for Minoritised Survivors

We are committed to supporting black and ethnic minority survivors with culturally sensitive and accessible services tailored to individual needs.



Accessible services

Offering accessible environments and compassionate support, we ensure everyone has the chance to thrive, connect, and lead fulfilling lives.

“empowering survivors to live free from domestic violence and abuse”

How to contact us - make a referral



Call 0300 3033 581
(available 24 hours, 365 days a year)



Our **Online chat** is available daily at the following times via www.safenet.org.uk:
10am - 12pm, 2pm - 4pm and 8pm - 10pm



e-mail contact@safenet.org.uk
This email is answered 9am-5pm, Monday to Friday. If you need an immediate response, phone or use our on-line chat.




Need help in another language? Our team speaks several languages or can arrange an interpreter.

*You can refer yourself, or be referred by someone you're working with.

If you are in immediate danger call 999
For non-emergency police enquiries call 101

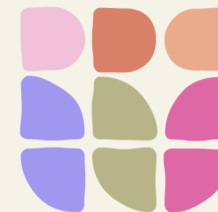
Follow us, raise awareness, and help support those in need.

 www.safenet.org.uk

 Safenet Domestic Abuse and Support Services

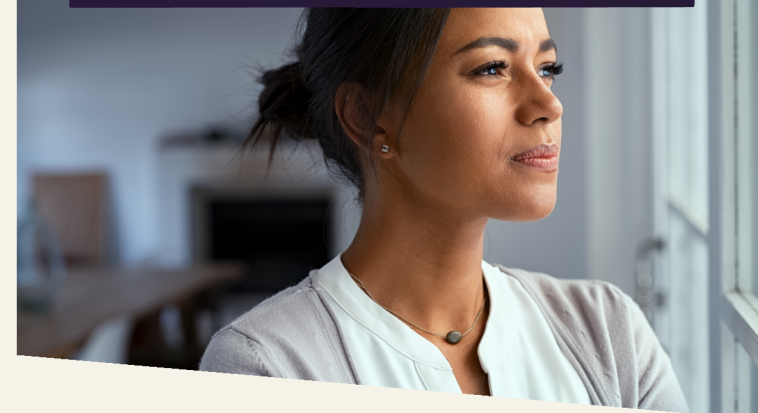
 [safenet_uk](https://www.instagram.com/safenet_uk)

 Safenet Domestic Abuse Services



safenet
a **calico** group service

Empowering you to live free from domestic abuse



Support services and safe accommodation for people affected by domestic abuse

www.safenet.org.uk





Our support

- * We have supported women and children in our safe refuge services since 1976. In recent years we extended our provisions to include male survivors and in line with our equality values we support trans & non-binary survivors too.
- * We believe everyone deserves to live free from fear, violence and abuse. If you're experiencing domestic abuse, you are not alone. We're here to listen, believe, and stand beside you—with care, understanding, and without judgement.
- * You don't have to wait for an emergency to ask for help. When you're ready, we are here. You'll be supported by a Domestic Abuse Practitioner who can support your goals, and together you can explore what support is right for you, providing immediate support if needed.
- * We can help you make a safety plan to keep you/you and your children safe, and provide emotional and practical support. If you need a safe place to stay, we can arrange that too.
- * Whether you want to talk, understand your options, or take your next steps to leave an abusive home, we're here to support you and create a safer, happier, more hopeful future.



Refuge and safe accommodation services

Safety and support to recover from abuse, free from fear.

- * **Safe Accommodation When You Need It** our refuge and safe accommodation services in Lancashire and Greater Manchester are open and staffed 24 hours a day, 365 days a year—BECAUSE SAFETY CAN'T WAIT....
- * **For Women and Children** we provide several safe 24 hr refuges and many 2nd stage move-on/safe houses, supportive places to stay for women with or without children who are at risk of, or escaping, domestic abuse. They include dedicated support for children & young people.
- * **Specialist Recovery Refuges** for women and children facing multiple disadvantages with more complex support needs. If you have accessibility needs, we'll make sure you have what you need to feel safe and supported.
- * **For Men** we deliver 24 hr safe accommodation in Lancashire, including private en-suite rooms within a supportive communal setting. We also have men's safe houses in Lancaster and Bury.
- * We provide dispersed, individual **safe houses** across the Northwest for people of all genders at risk of domestic abuse. These homes are in confidential locations and offer a calm, secure environment with daily support from trained DA Practitioners, to begin rebuilding a safe healthy future life.

Call us anytime on 0300 3033 581— we're here 24/7, every day of the year.
Our inclusive services mean we're here for everyone who needs safety, understanding, and support.



Community Support

Support at Home or in the Community

Whether you're still at home; planning to leave, or have already left, we can support you and your children to stay safe from further harm and to recover from the trauma of domestic abuse.

This support, for survivors aged 16+ is led by you, to meet your needs. Children & Young People are supported by our specialist children's team. These services are available in:

- Lancashire - Burnley, Preston, Lancaster (DASSL service)
- Bury - Community outreach & high-risk IDVA support.

The **support we provide** includes 1 : 1 support, small group work sessions, help to access emergency accommodation and access to other services. Support can include:

- safety planning for you and your home
- supporting you through the criminal or civil court process.
- helping you with re-housing and finances.
- emotional support - recovering from abuse, re-building your confidence and self-esteem.

Call today on **0300 3033581** to chat to our team to find out how we can help.

