



safenet

a calico group service



SafeNet Domestic Abuse and Support Services
Empowering you to live free from domestic abuse

0300 3033 581
safenet.org.uk



Who Are We?

Our domestic abuse services cover the North West of England, with support based in Burnley, Bury, Lancaster, Rochdale, Preston and Pendle.

We offer a range of different services and tailor them to suit each person's individual needs. This includes refuge services for women and children, male safe houses, community-based support, and specialist refuges for those with additional needs, such as addiction, mental health issues and ex-offending behaviours.

We understand that living with domestic abuse has a serious and life-changing impact on all aspects of life, particularly health and wellbeing, and all our support staff can support you and act as your advocate if necessary, to help you to access the right services to regain control of your health and wellbeing.

Our Services

Refuge Services for Women and Children

Our refuges are open 365 days a year to women and children who are at risk of or are escaping domestic abuse. We are staffed 24/7 to ensure we can respond effectively to emergency referrals to help those in crisis or in immediate need, and also to maintain security and safety for all our residents throughout the day and night.

We offer a communal refuge environment, where women and children live together and use shared communal spaces, kitchens, lounges, etc., building mutually supportive relationships with others who have been through similar experiences.

Most families stay in safe refuge for between 3-6 months, depending on their circumstances. During this time, refuge support workers work together with residents to explore the options available to them, and to help them reach their goals.

SafeNet Safe Houses

In addition to refuges, we also offer safe-houses in the North West for those at risk of domestic abuse. These residential properties are a stepping stone to independent living and are situated in confidential locations.

Our refuge residents can choose to stay in a safe-house if they are ready for greater independence but are still in the process of gaining confidence to live independently. They benefit from continued support through the refuge service.





Men's Safe Houses

We deliver a dedicated safe-house for men who are escaping domestic and interpersonal abuse. We also offer emotional and practical support, whilst recognising and addressing the gendered differences in the nature of abuse experienced.

We have the skills and ability to provide safe, secure specialist services, meeting diverse needs and offering a variety of accommodation services is fundamental to achieving this.

Jane's Place Recovery Refuge

We recognise that there are situations where survivors of domestic abuse need extra help and much higher levels of support, often over a longer period. Usually this is due to more complex needs, including addiction to alcohol and/or drugs, enduring physical and/or high mental ill-health, self-harming behaviours, or offending or ex-offending behaviours.

Other issues may also arise from being street homeless, groomed, sex-working, trafficked and other forms of exploitation and human rights abuse.

Bury Domestic Abuse Outreach Service

Our Specialist Floating Support and Outreach Services offer confidential, emotional and practical support in the community, helping those experiencing domestic abuse to stay safe and receive professional support with housing-related issues. They can talk confidentially to one of our experienced domestic abuse support workers to find the right level of support needed to move towards a happier, healthier and more secure future.

Our Services



lancashire
refuges

Lancashire Refuges is our countywide domestic abuse support service in partnership with Fylde Coast Women's Aid (FCWA), The Liberty Centre in West Lancs and Progress Housing Association in South Ribble and Chorley Women's Refuge.

Together, we offer a wider level of immediate support to victims of domestic abuse with a single point of access to accept referrals from across Lancashire, in Burnley, Pendle, Lancaster, Preston, Wyre, Fylde, Leyland, Chorley and Skelmersdale. We can help 24 hours a day, 365 days a year.

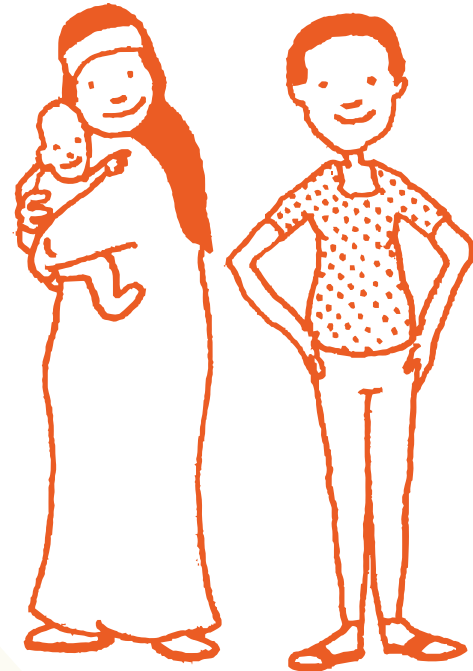
0800 303 3581

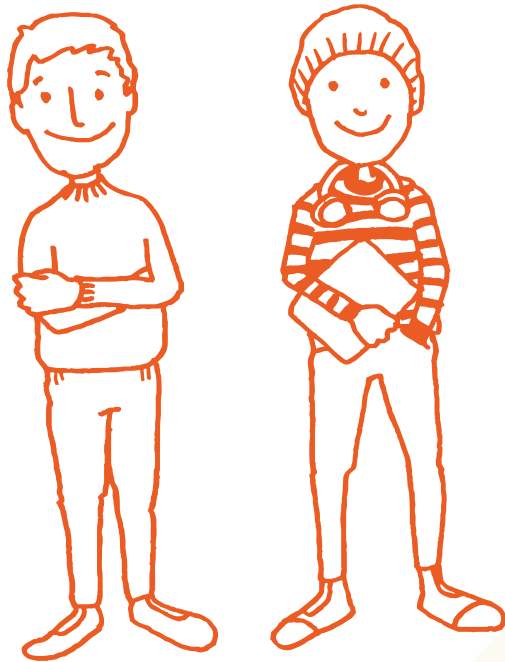
Children and Young People's Services

We provide a positive environment where children and young people feel safe and live free from abuse, helping them to thrive in all areas of their development.

Our experienced Children's Support Workers facilitate therapeutic one-to-one and group sessions, which provide opportunities for children to express their thoughts and feelings, both verbally and through drawing, writing, painting and free or structured play.

This support allows children to go some way to alleviate their traumatic experiences and work towards finding positive coping strategies for dealing with their emotions, rather than them becoming withdrawn and 'shut down', which can lead to issues in later life.





Specialist Services

We recognise the additional challenges faced by people who are at risk of or are escaping domestic abuse within the LGBTQI+ community, and are proud to have been awarded the Lancashire LGBT Quality Mark. We understand that families and ex-partners can perpetrate abuse using the excuse of a person's sexuality, and that transgender people can often experience higher hidden levels of abuse than they may in cisgender relationships.

We support survivors with physical, learning or sensory difficulties, mental health needs (such as depression or self-harming behaviours), past and present dependency issues, sexual health needs, and pregnancy and associated issues. We also understand that survivors from ethnic minority backgrounds can face many different barriers, and we take these into consideration, providing additional support to enable them to reach social and economic independence, and move towards a safer life.

We have dedicated bi-lingual support workers who offer specialist, flexible support to overcome language and culture barriers and support different faiths. We have staff who use British Sign Language, and we have established relationships with specialist disability support agencies.

Online Resources

We have a range of downloadable leaflets, toolkits and other digital resources available on our website for anyone looking for support around domestic abuse issues - on a personal or professional level - including referrals and practical help.

safenet.org.uk



safenet

a **calico** group service

 @calicosafenet

 @SafeNet_UK

 0300 3033 581

 contact@safenet.org.uk

safenet.org.uk

