

contact us

 @safenet_uk

 /calicosafenet

0300 3033 581

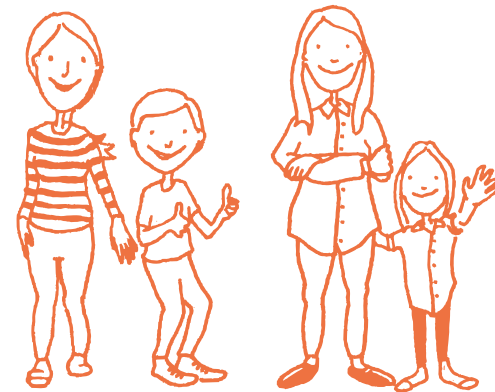
lancashirerefuges@safenet.org.uk

www.lancashirerefuges.org.uk



lancashire
refuges

empowering you
to live free from
domestic abuse



 safenet
a calico group service

 THE
LIBERTY
CENTRE

 Progress
HOUSING GROUP

 FCWA
FYLDE COAST
WOMEN'S AID

www.lancashirerefuges.org.uk

about us

Lancashire Refuges is the countywide safe refuge domestic abuse support service led by SafeNet Domestic Abuse and Support Services, in partnership with Fylde Coast Women's Aid (FCWA), The Liberty Centre in West Lancs and Progress Housing Association in South Ribble and Chorley.

Together, we offer a wider level of immediate support to victims of domestic abuse with a single point of access to accept referrals from across Lancashire for safe refuge in Burnley, Pendle, Lancaster, Preston, Wyre, Fylde, Leyland, Chorley and Skelmersdale 24 hours a day, 365 days a year.

We have more than 100 units of safe accommodation across Lancashire and our inclusive, open door policy means that we support even more vulnerable people who are living with domestic abuse.

how you can help victims and survivors



Donate

food, toiletries, new or good quality clothing, baby care items, new toys, crockery/cutlery, towels etc



Volunteer

your time to support victims and survivors



Organise a coffee morning

or other fundraising activity for Lancashire Refuges – you are welcome to join SafeNet's Supporter's Group if you have time to donate



Seek goods in kind

arrange donations of goods from local businesses or retail shops

our services

Safe and confidential refuge accommodation services for women and children

Specialist 'recovery refuge' services for women with high level additional complex needs such as dependency on drugs and alcohol, mental/physical ill-health and offending/ex-offending behaviours, women who are long term street homeless, sex workers and those forced into sex work and/or trafficked

Age appropriate support for children and young people recovering from domestic abuse who are living with us in refuge

Male safe houses and support for male victims/survivors

Dedicated bilingual support for black and ethnic minority victims (BAME) including specialist support for forced marriage, FGM and other so-called 'honour' based violence

Extra bespoke support for those identifying as LGBTQI, those with additional sensory/mobility needs and/or learning needs and for any other needs identified