



2016-17

Annual Report



Thank you for saving me from him and from my awful life.

Thank you for being a rare group of women who are willing to go that extra mile.

I hope you all know how much I appreciate you, even though I didn't always show you.

I hope you know how grateful I am for not giving up on me, and for your continued support.

I am sorry I got angry and I shouted and swore, it was never aimed at any of you, even though it seemed that way when I completely lost it.

I am grateful for your kindness and I need you all to know that you have touched my heart and the hearts of many others.

Thank you for saving me from him and from my awful life.

*Thank you,
thank you,
and thank you.*



Part of the Calico Group

SafeNet joined The Calico Group six years ago, and benefits tremendously from the support available to us as part of a group of companies with the shared purpose of making a difference. The Calico Group has supported SafeNet's development and invested in our services, facilities, staff and most importantly those who use our service.

A word from our Chair

Karen Ainsworth

Change is constant, and our ability to respond flexibly and quickly to the ever-changing operating environment is one of our key strengths. We are a pro-active organisation and this has helped us to influence and define services, rather than simply responding to what's already out there. Our Recovery Refuge Jane's Place is an example of our determination, ambition and genuine desire to tackle the most 'hard to do' aspects of domestic abuse and violence.

Rapid growth has impacted in many ways, and it has not always been easy. However, our primary objective is to provide support for anyone escaping domestic abuse, and it is this that enables SafeNet to aim high and deliver excellence. The trustees have supported the Management Team to deliver our ambitions, and have provided a steady strategic focus throughout the year.

Increasingly, Commissioners are packaging services so that there is one main contractor, and SafeNet's loss of the IDVA service in parts of Lancashire is an example of this. However, we recognise that we will not win every contract that we bid for, although our track record speaks for itself, with more gains than losses.

Innovation is another key strength, and the male safe house project is something we are particularly proud of. We are always being asked 'what about men?'. Now we can say with confidence that we provide a service that will meet their needs. The sad fact is that it has been full since it opened, as is the case with all our accommodation-based services.

Our Recovery Refuge opened for business in July 2017 and has brought with it new challenges and opportunities. There is much interest in this model, and I anticipate that SafeNet will be invited to develop similar services in other areas.

Our patrons, John and Penny Clough, have such strength and determination to ensure that others do not have to endure what their daughter Jane experienced. On behalf of SafeNet, I am proud to be associated with them, and everything they have done to support our service, keeping as many people as possible safe from further abuse, and preventing further murders.

Finally, a huge thank you to everyone involved in making a difference in the world of domestic abuse.

Management Board

Karen Ainsworth

Chair

Sharon Livesey

Vice Chair

Sue Mayor

Treasurer

Jackie Davies

Board Member

Rachel Horman

Board Member

Annie Huntington

Board Member

Kelly Shaw

Board Member

Saba Iftakar

Board Member



A word from our Patrons

John & Penny Clough



First and foremost, thank you to all our donors and contributors whose kindness, help and generosity have ensured that SafeNet has survived another year. Excellent pro-active management has seen this wonderful charity, adapt and thrive in difficult circumstances. To all employees and volunteers, whatever role you have, you are providing the essential skills and support that domestic abuse victims need, to help them manage the harm and traumas they have endured, and aid their recovery. Your dedication speaks volumes. You are all life changers, life givers and life savers, and it means so much to us personally as Jane's parents.

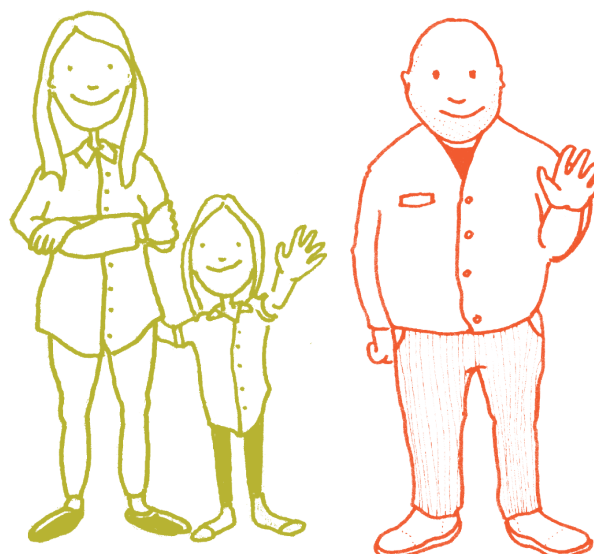
All we wanted was for Jane to survive the difficult circumstances she found herself in, be safe, heal and thrive in the future. Jane needed a safety net, and people who could have kept her safe to understand the risk that she was at of further harm. SafeNet truly 'gets it', the reality for domestic abuse victims, taking that momentous, very brave step to access help. For all victims, in our hearts, we want them to be able to escape domestic abuse, and to access the best support and safety provisions. Sadly, the reality is that Refuges throughout the country have closed.

A victim never asks to be a victim. Victims have to make all the moves to escape and keep safe. When will victims be kept safe from perpetrators? When will it be that the perpetrators are actually the ones who need to change for what they have done?

As campaigners and Patrons, when we learned that the Supporting People Fund was being withdrawn, and the impact it would have on Refuges throughout Lancashire, we knew we had to act. With the support of 2BR highlighting our concerns, and supporting a petition to get Lancashire County Council (LCC) to rethink its funding, it generated public support, and a meeting and dialogue with LCC, who thankfully made alternative funding available. This gave Lancashire Refuges a reprieve for the timebeing, but we are sure it will be a battle we need to revisit.

It saddens us that investment in our Refuges and support services, to ensure the best provisions for domestic abuse victims, isn't seen as the money-saving investment it actually is. Every murder we prevent saves £1.5 million. Every penny we spend saves the NHS, Police, and Social Services down the line. The monetary cost that matters to many should be outweighed by the further harm to victims if the services were not there.

We are delighted that SafeNet is building up Refuge provision, and how wonderful that we now have the North's first Recovery Refuge, Jane's Place. Thank you all who have, in whatever way, ensured the continuation of SafeNet. We need to carry on thriving and continuing with our expansion, because too many victims are not getting the support and Refuge provision they need to escape domestic abuse.



A word from our Charity Manager Helen

It is my pleasure to report another successful year for SafeNet. We have grown as a charity, expanded our services in Lancashire, and we have recently begun delivering a new service in Rochdale, Greater Manchester. Whilst we find ourselves, like many charities, in a constant state of flux, which poses numerous challenges, we are learning all the time how to best adapt and thrive in these changing times.

We are inspired each day by the victims and survivors, who escape abuse and stay with us in our Refuge. They survive and mostly thrive once they are away from the violence and abuse, and we admire their courage as they take action to change their lives and start again - that is truly brave. Many do not know how they will survive practically, financially, emotionally, and, as we work it out together, they rebuild themselves and their families – sometimes this takes them the rest of their lives.

We are proud to have kept many victims and survivors safe from serious harm and homicide and, whilst they are primarily women and children, we are also pleased to report that this year we ran a successful 'Male Victim Safe House' pilot, which has now become a permanent SafeNet service.

We have also invested much time and effort into developing our Recovery Refuge, Jane's Place, a safe accommodation space for women and children escaping abuse with a complex range of additional needs, who would normally be unable to access traditional communal Refuge provision, such as the use of drugs and/or alcohol, higher mental or physical health issues, or offending behaviours. Jane's Place is the result of many years of work for SafeNet and The Calico Group, and exemplifies what can be achieved through commitment, determination and excellent partnership working. Jane's Place opened in July 2017 and has been full to capacity ever since.

SafeNet's most important resources are our staff, volunteers, board members, patrons, supporters, Group colleagues and partners in key agencies, who share our values and support our purpose to reduce violence and abuse.

Securing appropriate levels of funding for domestic abuse services continues to be a key work area. We diversified our efforts to gain funding, both for existing support services, and to create new services to meet emerging priorities. Whilst the funding environment remains problematic, we have been active, influencing funding bodies to replace funding lost in cuts, and sourcing new funds. We are fortunate to have benefitted from our supporter's generosity, who donate gifts in kind, and essential resources for our residents and clients.

This year, we have celebrated our Ruby Anniversary by recognising our achievements from our humble beginnings. It is with mixed feelings that we report a consistent increase in demand for our services, and we will continue to work for safer relationships, and safer communities, advocating for a fairer, more equal society.

Finally, thank you for supporting this work we do, you help us to go one step further every day.



The local and regional picture

April 2016 - March 2017

Taken from Safer Lancashire MADE – (Multi-Agency Domestic Abuse Data)

There were

27,748

referrals to Lancashire Constabulary regarding domestic abuse, including 20,326 calls to the Police requesting response to domestic abuse incidents.

10,606

of these reported domestic abuse incidents were classed as crimes, which is 38% of all contacts with Lancashire Constabulary. 70% of those were assaults, 10% criminal damage (excluding vehicles) and 13% harassment.

2,561

people for domestic abuse offences, with 79% of cases having successful outcomes. Although calls to the Police in this period increased by 20% from last year, prosecutions by CPS of domestic abuse offenders decreased by 26%.

There were

3,065

high risk domestic abuse cases reviewed by Lancashire Multi-Agency Risk Assessment Conferences (MARACs), with 3,590 children living in those high risk households (26% of these were repeat cases).

3,733

children were referred to Lancashire County Council's Care Connect team at Children's Social Care for domestic abuse related issues.

Police data from each of the SafeNet localities

District	Calls to the Police	Contacts (referrals) to the Police	Rate per 100 population	% Crimed
Burnley	1,627	2,215	25.31	39.2%
Lancaster	1,753	2,445	17.04	42.6%
Preston	2,357	3,099	21.85	40.7%

Calls are police incidents that are recorded on the police control centre database that have a domestic abuse qualifier.

Contacts are the total calls to the Police about domestic abuse incidents, plus additional referrals recorded on Protecting Vulnerable People (PVP) database.



How SafeNet can help

SafeNet protects victims and survivors of domestic abuse through the provision of safe refuge and support services, and promotes the prevention of further harm through various initiatives, including work to build safe and healthy relationships and promote equality. We offer expert practitioner knowledge and deliver a range of specialist services including:

Communal Refuges – currently in Burnley, Preston and Lancaster

When families are living in abuse, it touches every aspect of their lives and the effects can be devastating. This year, SafeNet's Refuge Support Services in Burnley, Preston and Lancaster delivered vital, life changing services in a safe environment to hundreds of women and children, who were previously living in violent and unsafe homes. They benefit immensely from a safe, secure and non-judgemental environment, which empowers them to rebuild their lives and supports their recovery. Our Refuges offer:

Safe and confidential places to stay for women and children escaping abuse

1:1 key working and support around a set 'support and resettlement' plan

Specialist age-appropriate support for children and young people

Access to legal, financial and other practical support measures

Specialist support for those from ethnic minority origins (including bi-lingual language support, cultural and faith support), for those with additional health needs, and for housing and resettlement

On-site group work programmes, including the 'Freedom Programme' and 'Power to Change'

Group activities, finding your voice, sewing group, pamper evenings and cultural celebrations

Safe Houses: currently in Burnley and Lancaster

Our Safe Houses are move-on properties for those who are ready to move out of our Refuge, but who still want regular support, or for those with different support needs which cannot be supported in a communal setting.

Male Victim Safe House:

A safe accommodation service in Burnley for male victims and their children.

Community Based Support – currently in Blackpool and Lancaster

We deliver:

Independent Domestic Violence Advisor (IDVA) Services, navigating the criminal justice system for those at highest risk of serious harm and homicide

Community group work including the 'Freedom Programme' and 'Power to Change'



What has happened this year

We reviewed SafeNet's purpose and widened our charity objectives to extend our remit, and include other vulnerable groups in crisis. We re-named our charity to reflect this change to SafeNet Domestic Abuse and Support Service.

With the help of our Patrons John & Penny Clough and our MP Julie Cooper, **we actively lobbied** Lancashire County Council (LCC), Lancashire's Police and Crime Commissioners Office (PCCO), MPs and CEOs, and campaigned via regional press, radio and television with a petition to oppose the proposed withdrawal of funding for Lancashire Refuges as part of wider LCC funding cuts. We were fortunate to have support from a wide range of agencies and individuals, including from the statutory agencies we lobbied, **resulting in a positive outcome**, as replacement Prevention and Early Help (PEH) funding was allocated to all Refuge services in Lancashire. However work previously taken to restructure SafeNet in light of the possible cuts ahead placed us in a strong position to deal with all potential outcomes.

The application to Burnley Council for **planning permission to build the new Recovery Refuge** was granted at the beginning of 2016, and preparation work began with a one-year build anticipated. An application to part fund the facility via a HCA grant was successful, and the facility was completed and handed over by Ring Stones to SafeNet before the build deadline.


We were **awarded the contract to deliver Blackpool C/IDVA Services**, and the service went live on 25th April 2016. Five existing staff TUPE over and were welcomed into SafeNet and, over this year, we have worked to build strong relationships with commissioners and partner agencies, attending all multi-agency fora/steering groups.

We submitted tenders for new domestic abuse contracts with mixed results, including a tender for Kirklees IDVA Service (unsuccessful), and for Blackpool IDVA service (successful), and learned much from these processes. Our PQQ for Calderdale Borough Council was accepted.

We reviewed the use of our Preston facility and **increased the number of available accommodation units** from 15 to 25 – the aim was to maximise the use of space so that we could help many more families, and increase our income to remain sustainable, which has been achieved.

We opened four new Safe Houses in Burnley, which means that we can now offer secure move-on support for an extended period for those families who need it. This also allows us to accommodate some more diverse families, for whom communal refuge would not be an appropriate setting.

The successful pilot of a new accommodation service for male victims and survivors of abuse, **the 'Male Victim Safe House'**, resulted in a new on-going service for male victims in the North.



We established **our first Safe House in Lancaster** in conjunction with Places for People, which can accommodate two families at any one time, bringing our accommodation in Lancaster to eight family units.

We funded **two new posts of Volunteer Co-ordinator and Fundraising and Resource Co-ordinator**, increasing our management capacity and supporting our growth.

We submitted a **successful tender to deliver Rochdale Domestic Abuse Services** for a contract period of three to five years. The new service in Rochdale went live in July 2017.

DCLG funding – We submitted a successful funding application (as part of a larger pan-Lancashire bid) for complex needs, BME and children's support workers for our existing Refuge provisions in Burnley, Preston and Lancaster (for a 12 month period from 1st April 2017), and revenue funds for the Recovery Refuge service (for a 10 month period from June 2017 to end March 2018). The total amount received was £294,591.

We were part of a much larger tender bid by Lancashire services and partner agencies for **Lancashire Victims Services**. All Lancashire IDVA services were included in this service and, unfortunately, our bid was unsuccessful and the contract was awarded to Victim Support Lancashire. This resulted in the loss and closure of SafeNet's specialist IDVA services in March 2017. Fortunately, we were able to offer alternative employment to all experienced DA practitioners, retaining eight of the nine staff.

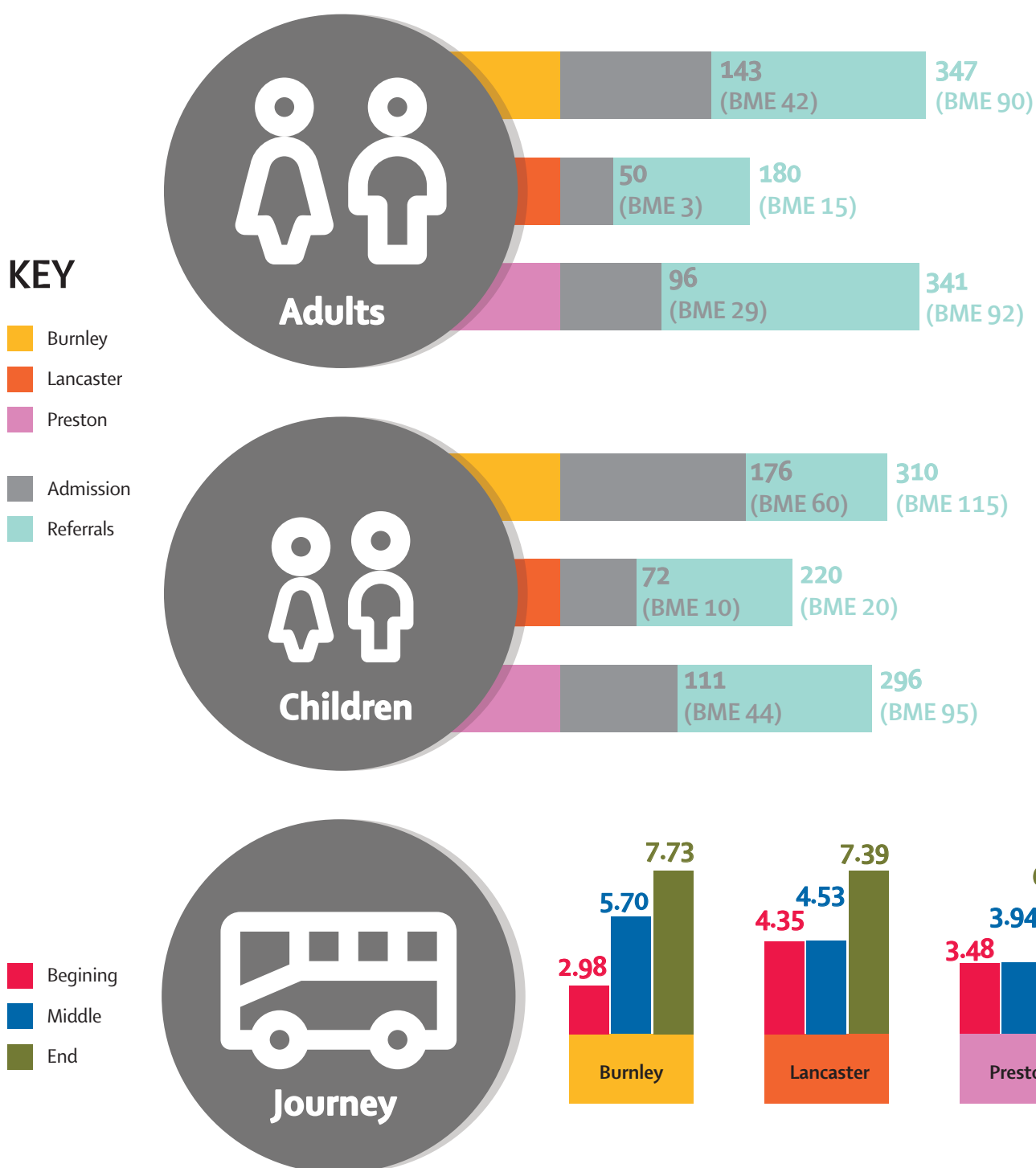
We were awarded the **Safer Lives 'Leading Lights' accreditation**, which is the mark of quality for domestic abuse services, recognised by commissioners and funders across the UK.

We were **awarded £9,043** towards this year's costs of delivering group work by East Lancashire Clinical Commissioning Group: Prescription for Wellbeing Grants 2016/17 for the Freedom Programme & Power to Change Programme.

We were **also awarded £8,915 by Lancaster District Community Safety Partnership** towards the cost of delivering group work sessions in Lancaster.

We were **awarded £132,466 over three years from Children in Need (CIN)** to fund two full-time children's workers at our Burnley Refuge, plus a small amount of funding for training, travel, toys and outside play area.

Our work throughout the year



Average score from 1-10

SafeNet measures the residents' journey at three key points during their stay with us to monitor their progress.

Residents are asked to score themselves from 1 to 10 in seven areas which are, feeling safe from domestic abuse, health and wellbeing, financial health, housing, confidence and self esteem and their overall quality of life, including their children if applicable.



"You all listened and believed me, thank you"

"You made me feel safe and peaceful, staff were always on hand, and very quick to answer my queries. The Refuge was a godsend for someone in my position. Moving out is a bit of a wrench because everybody has been so kind, and I felt safe."

"They care, they all care at SafeNet"

"SafeNet helped me understand that I needed to take my time to recover, I needed time"

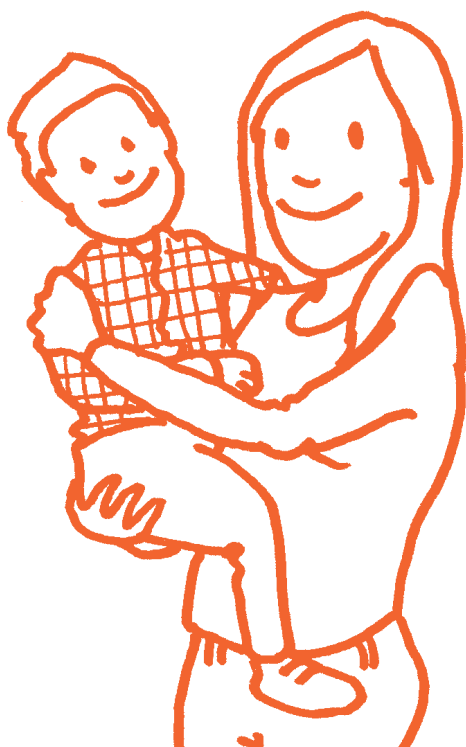
"I wouldn't have the confidence if it wasn't for you guy"

"I couldn't even choose what flavour crisps to eat when I arrived, I literally couldn't decide, let alone make decisions about money, or where I was going to live"

"I have learnt the valuable lessons that I don't need to be in a relationship – I can be on my own and that's OK"

"I feel ready to go forwards with my life wherever it takes me. SafeNet have given me the tools to recognise positive and negative things in my relationships"

"I have learnt to respect and love me for me"



Supporting women and children from Black and Minority Ethnic origins

Resident's Story

"I came to the Refuge last year with my five year old daughter, having just given birth prematurely. My baby was in the intensive care unit. Two days after being discharged from hospital, my husband assaulted me again, resulting in injury and bleeding from my caesarean section. I lost a lot of blood and called the Police, who involved Social Services. To my great relief, they found me a safe place to stay at SafeNet. A few weeks later, I realised that, despite being in the UK for eight years, I had no rights to be in the country. Social Services were paying for me to stay at the Refuge.

The Refuge made all the difference to my life. I attended the Freedom Programme and the Power to Change group work programmes, and these helped me to understand why his violence increased during pregnancy. It broke my heart, but at least I started to understand that it wasn't my fault, there was nothing I could have done differently to prevent the attacks - apart from leave him.

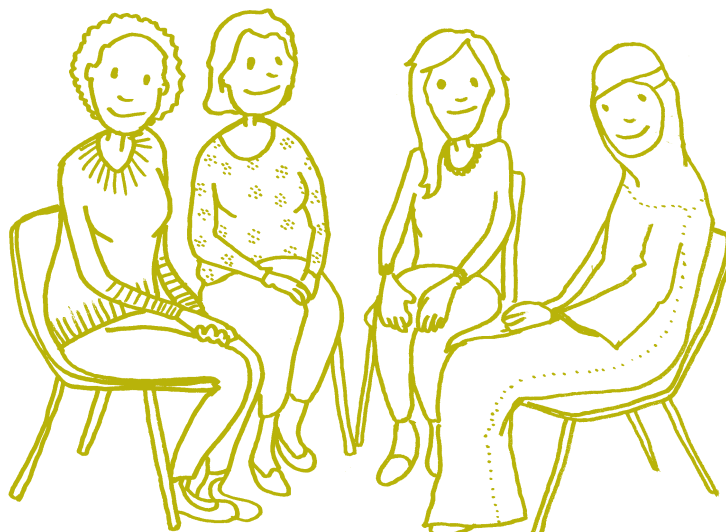
The police also referred me to the immigration unit, and I had to 'sign on' at the police station every month. With the help of my Support Worker, I began to feel less guilty about staying in the abuse over the years with my children, to understand why I had stayed, and to gain insight into my own life, my circumstances and existence. Now if someone asks me why I stayed, I can answer them without feeling guilty and responsible for his abuse towards me and my children.

The Refuge Support Workers helped me; I didn't even know how to get the bus to the hospital. They supported me with this, and liaised with the hospital and Social Care so I stayed safe. They helped me to apply to the Home Office so I could stay here, as I class the UK as my home. I was thrilled when I received the letter from them that said I was allowed to stay here! I couldn't believe it, but my Support Worker told me it was true! They helped me apply for a bank account, a National Insurance number and benefits.

The Children's Workers helped my daughter come to terms with what she had been through, the terrible abuse she had suffered. They enrolled her at a local school and she made excellent progress. My baby was discharged from hospital and SafeNet collected donated baby items for her. I was so grateful knowing how much people cared about someone who they didn't even know, how they seemed to understand my situation.

Today, I woke up with an overwhelming feeling of peace and happiness; I remembered that I can now stay in the UK with my daughter, and we can build a life together. I was helped by my Resettlement Worker to move into my own home with my daughters and, although I get a bit scared sometimes, I have her number so I can ring if I need help.

SafeNet have helped us rebuild our lives. I hope I can visit my family in Pakistan in the future, who I haven't seen for nearly nine years. I hope the Refuge goes from strength to strength, and that one day I can give back some of the support and kindness that you all showed me. Thank you so much.



Children and Young People

Many of the children who stay with us are in Social Care and the Child Protection System, with the number rising year-by-year, as domestic abuse is increasingly recognised by multi-agencies.

Child's Story – girl, age 10 – Orchard House

"I got home from school one day and my mum had packed us a carrier bag with some of our things. She told me that the Social Worker was coming to pick us up soon. Mum was crying the whole time."

"When we got to the Refuge I was really scared and didn't want to leave my mum."

"I started to cry because my mum was really upset, and I remembered I had left my JoJo Bow at home, and it was the white sparkly one, which was my favourite."

"I remember seeing the new bed at the Refuge and being happy because it was pink. I didn't have any pyjamas but the lady found me some from the cupboard."

"I enjoyed being with the Support Worker. We would go to the cinema and I could talk to her about things that had happened."

"I told her about the time my dad pushed my mum when she got the wrong shopping."

"I made loads of friends at the Refuge, which was really good because we started a new school together."

"Mum made friends too, and that made me happy."

"Me and my mum are just waiting to get our new house. Mum has told me that when we move in, we can have a pizza and watch a DVD together."

In Refuge

Referred :

826

Accommodated:

359

In the Community

Referred:

160

The Children's Support Workers help the children to work through their domestic abuse experience, and deliver therapeutic one-to-one sessions with individual children, as well as group play sessions, focussing on being safe, relationships, feelings, behaviours and self-esteem.

They work closely with local schools, helping the children to develop strategies to manage their home life whilst living with domestic abuse.

It is with sadness that we report funding for our community-based service in Lancaster ended in March 2017, and it was a privilege to deliver this service, and to contribute in such an important way to the safety of all victims and survivors.

Here's what some of the children and young people had to say:

"It made me feel happy and better"

"I liked doing our memory box... I was listened to"

"It helped when we chatted, my Support Worker made me feel happy"

"This has helped me think about things more"



What's new for SafeNet



SafeNet Working with Men

SafeNet have supported male victims for several years through our community-based IDVA services. However, this year, we have developed our first accommodation based service for male victims and survivors of domestic abuse. Following a successful six month pilot scheme, we have accommodated three male victims this year, and this service has now been established permanently. Demand for the service is steady, and we are confident that we will be able to continue to provide safe specialist support to male victims.

Male Victim Resident's Story:

"Twelve months ago, I'd never heard of SafeNet or Calico, or anybody connected to the organisation. Over six months prior to coming to Burnley, I'd made the first steps to leaving my abusive partner. At first, I contacted the National Domestic Abuse Service, always at night, always by instant messaging, forever mindful of the danger I was putting myself in."

"After a few months, I managed to contact the National Helpline in the middle of the night on a cheap mobile I'd bought a couple of weeks beforehand. I walked down the street at 1.30am and told them everything. It was the National Helpline who gave me the courage to make my first steps in leaving."

"The lady I spoke with gave me a list of locations across the UK willing to take male victims, one of which was listed as East Lancashire. After a week of secretly phoning around various organisations, I was finally put in touch with a friendly and positive lady from SafeNet."

"Since December, when the Safe House first opened, my Support Worker and all the other staff members at SafeNet have had such a positive influence on my life. If it wasn't for her determination and encouragement, I'm not sure if I'd have had the strength to leave my abusive relationship."

"My time at the Safe House has at times been tough, but SafeNet has given me the chance to start my life again without fear or harassment. Each day that passes gives me new hope. I'd like to thank my Support Worker and everybody at SafeNet for giving me that opportunity."





Jane's Place

On Friday 16th June the North's first complex needs recovery refuge Jane's Place opened its doors. The Recovery Refuge is called Jane's Place in memory of Jane Clough who was brutally killed by her ex-partner in 2010.

The Recovery Refuge, the first of its kind in the North offers safe and secure temporary accommodation for women and children at risk of domestic abuse, who have additional complex needs.

Those complex needs may include mental or physical health, drug or alcohol use, self-harming, offending behaviours, sex working, grooming, trafficking, or a combination.

Women with complex needs are often unable to stay at communal refuges, as their high level needs can impact on other families in refuge. SafeNet recognise the increased vulnerability and risk of serious harm and homicide that women and children face when additional complex needs are present. The refuge will deliver in house domestic abuse support alongside drug, alcohol and mental health recovery programmes, supporting women and children's recovery to take back control of their lives, and move forward positively.

"When all other doors have closed, at Jane's Place we will keep our door open"

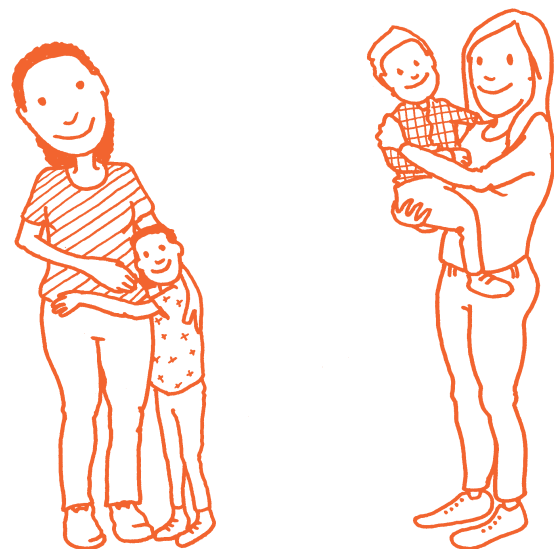


Rochdale Service Launch

Our new emergency accommodation and support services for victims and children affected by domestic abuse has launched in the borough of Rochdale.

The service will provide 15 safe Refuge units for women and children escaping abuse, 24 hours a day, 365 days a year.

We will also provide confidential, emotional and practical support to help survivors stay safe in the community, and with housing related issues, including resettlement.



How you can help SafeNet

Volunteering

In 2016-17 SafeNet recruited and trained 41 volunteers, with seven of them successfully gaining paid employment with SafeNet.

We are committed to our volunteer scheme, where volunteers work alongside our staff to provide essential domestic abuse support, whilst developing their skills with on-going training and support. As an organisation, our volunteer input strengthens our support services in many ways. Volunteers develop confidence, with many going on to access further training and job opportunities. We also offer apprenticeships and student placements, all of which contribute a great deal to our service.

"The placement was extremely informative and I have loved every minute of it. SafeNet provides the perfect opportunity to develop social work skills. It has been very challenging, professionally and personally, and I have become more confident and assertive because of it."

"Thank you for taking me on as a volunteer. I would not be where I am without this opportunity."

"If you're thinking of volunteering for SafeNet, start today it will change the way you see the world forever, and for the better."

Donating to SafeNet

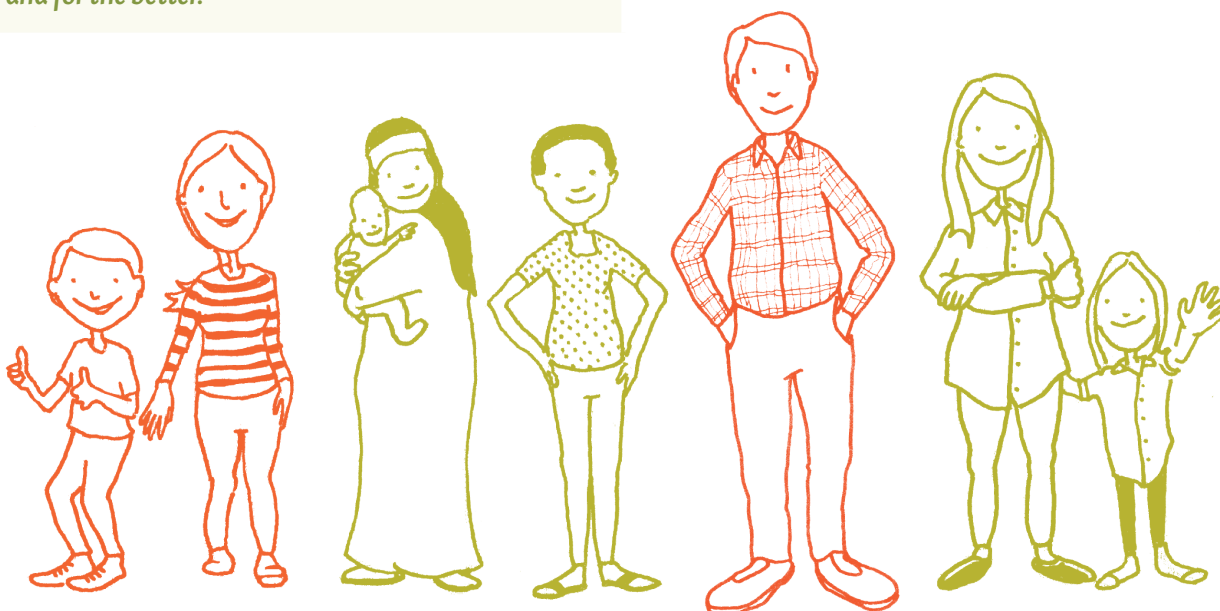
The best way to support SafeNet is to give regularly. It provides a reliable income that we can count on, allowing us to plan in advance, and budget more effectively.

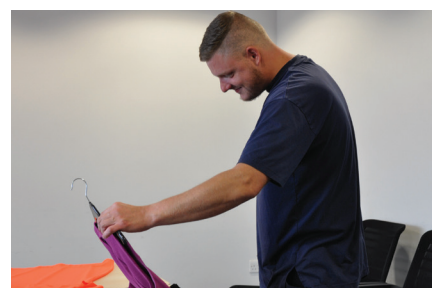
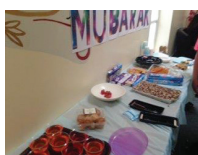
What can you buy for 16p a day? You might think 'not much', but a gift of 16p can provide basic essentials, like a warm drink on arrival at the refuge for women and children who have just fled their home in fear of their lives. 16p a day – that's just £5 per month – helps us to provide life-changing opportunities, like support and training for the women and children.

You don't always need to give money in order to make a difference. Many of our residents fleeing domestic abuse come to our Refuge's with only the clothes they are wearing.

We accept donations of clothes (for women, men and children), toys, hygiene items, food, bedding, and towels. All of which helps our residents and their families to rebuild their lives.

To arrange a donation drop off please email contact@safenet.org.uk





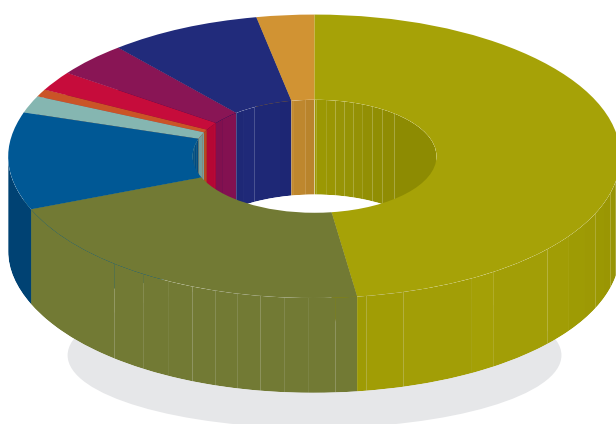
Empowering you to live free from domestic abuse

How we've utilised our Income in 2016 – 17

	£'000 2016	£'000 2017	% increase
Total Income	£1,397	£1,996	43%
Expenditure			
Staff	£953	£1,157	
Other	£494	£616	
Total Expenditure	£1,447	£1,773	
Balance	-£50	£223	

Analysis of Charitable Income 2016-2017

- 48% ● Housing Benefit
- 21% ● Supporting People
- 11% ● DCLG
- 2% ● Service Charge
- 1% ● Children in Need
- 2% ● Early Support
- 4% ● IDVA Burnley
- 8% ● IDVA Blackpool
- 3% ● Donations



Thanks to our Supporters

Organisations

Agnes & Cat
Aladdin Separation Technologies
Althams Travel
Animal Care - Lancaster
BAE Systems
Beauty Shop Barrowford
BEFA
Blackburn A+E
Boots
BPRCVS
Burnley and Pendle Scooter Club
Burnley Food Banks
Burnley Police
Burnley West Team
Carnforth Inner Wheel Club
Caton
Chatterbox Club
Community Safety Partnership
Crawshaw Hall Nursing Home
Derian House Children's Hospice
Down To Earth
Farmhouse
Filberts Bakery
Francis C Scott
Furniture Matters
Housing Benefit Department
Ingol Woman's Institute
Inner Wheel of Padiham
Inspire
Inspiring Grace
Lancaster Roses Women's Institute
Lancaster Soroptimists
LCC Children and Social Care
Life Church
Love & Etiquette
Lupton & Place LTD
Madni Institute
Marden Rawsthorn Solicitors
Marks and Spencer
Mehsbaan Cash and Carry
Mendit/Landway
Mother's union
Next
Olive Branch - Lancaster
Pat Wood
Pendle Leisure Centre
Pinewood Vets
PPU
Preston Branch Of Gideons
Preston Job Centre
Preston United

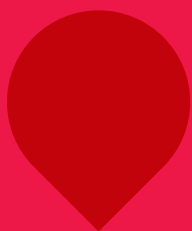
Project Links
Project Lives
Rotary Club of Burnley
SAFE Centre
Safer Preston IDVA Service
Sainsburys
Share It Project
Snowdrop Doula
Soroptimist International of
Rossendale
St Andrew's Cubs
TAS Partnership
Tesco
The Co-Operative Food
Training Brothers of Charity
Trussell Trust
TRW Automotive
Uni Play LTD
Willow Lane Primary School
Women's Institute
Yasin Institute & Dar Al-Marifa

Churches

Christ Church United Reformed
Church
Fulwood Methodist Church
Greenbrook Methodist Church
Hapton Methodist Church
Heysham Free Methodist Church
Ingol Methodist Church
Longton Community Church
Padiham Road Methodist Church
Read United Reformed Church
Sion Baptist Church
Sister Eileen - Holy Family
St Andrew's Church
St Cuthbert's Church
St John's Baptist Church
St Joseph's R C Church - Withnell
St Lenard's Church
St Margaret's Church
St Matthew's Church
St Thomas' Church
Trinity United Reformed Church
Wheatley Methodist Church

Schools

Ashton Primary School
Blessed Trinity RC College
Burnley College
Heasonford Primary School
Holly Grove Primary
Lowerhouse Junious School
Park Hill School
Pendle Primary Academy
Rosegrove School and Nursery
Rosewood Primary School
Sir John Thursby
St Chad's
St James' Primary School
St Joseph's
StoneyHolme Primary School
Wellfield Church School



SafeNet

Empowering you to live free from domestic abuse

safenet.org.uk